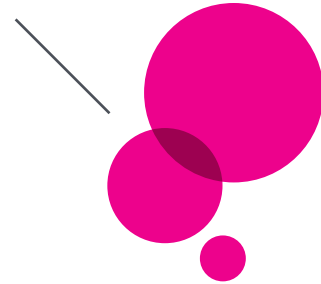


BRANDMARK & LOGOTYPE COLOR

PROCESS MAGENTA + 75% 425

visual equivalent 221
C=8 M=100 Y=24 K=35
R=145 G=0 B=75
91004B



PROCESS MAGENTA

C=0 M=100 Y=0 K=0
R=209 G=0 B=116
D10074

the new children's museum

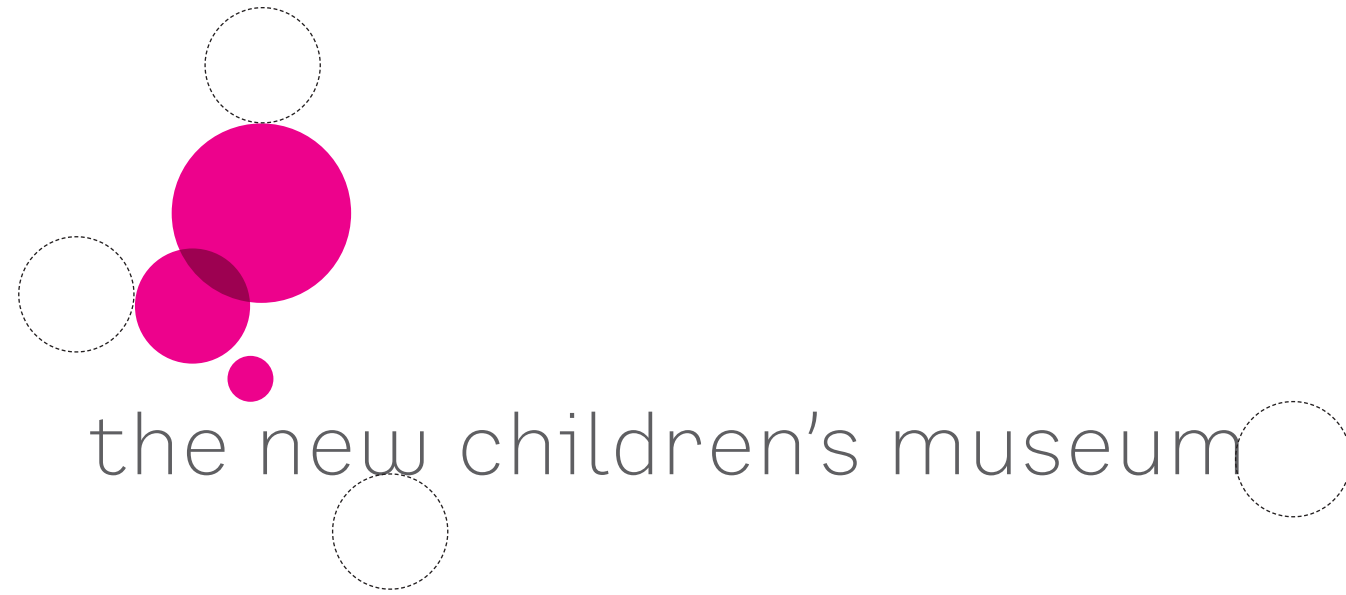
425

C=38 M=28 Y=21 K=63
R=86 G=90 B=92
565A5C

MINIMUM CLEAR SPACE

It is recommended that the signature maintain sufficient clear space—approximately the size of the middle circle.

The horizontal NCM logo is preferred.

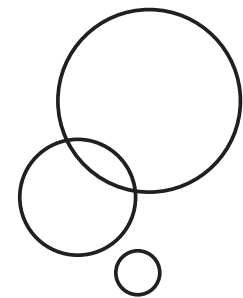


BLACK & WHITE/REVERSE

The positive version of the signature shown here should be used for black and white applications.

The reverse version can be used on top of a solid for special needs, as long as clarity is maintained. The full-color signature should never be used in this application.

Note: the scale of the mark to the logotype is slightly different in the positive and negative versions for legibility.



the new children's museum



the new children's museum